



Kinda Shenzhen Kinda Technology Co., Ltd

Add: 316#, Baiwang Technology Building, 1002 Songbai Road, Xili, Nanshan District, Shenzhen, China.

Tel: +86-755-8524 0502

Web: www.kinda-vfd.com

Email: info@kinda-vfd.com

Kinda



Shenzhen Kinda Technology Co., Ltd

Company Profile

Established in 2010, Shenzhen Kinda Technology Co., Ltd is a professional manufacturer, specialize in R&D and production of AC drives.

We have built up a comprehensive product family. Frequency inverters' power covers the range from 0.4 to 630kW, and voltage range is between 220V and 480V. More than **300, 000 units** of Kinda inverters are running smoothly at different industrial sites.

We believe “*quality is Kinda's life*”, “*every product is Kinda's promise*”. We put it into practice at purchase, R&D, manufacturing and service processing. Lots of solid work had been done to enhance the products' quality. With years of persistence, the total failure ratio of Kinda frequency inverters has been controlled below 1%. We never lose a customer because of the quality problem.

Kinda will always persist in the quality principle, focus on the AC drive technology, and try its best to provide the cost-effective products to our partners.

Join us, enjoy the business.



Company Tour



Production Line



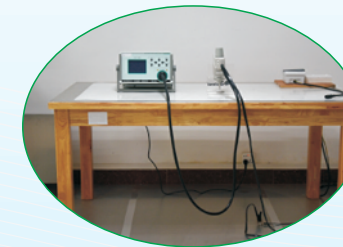
PCB Aging Test



Finished Products Aging Test



Warehouse



Electrostatic Test



Surge Test



Environmental Test

Certificates



Software Certificate

➤ Production Processing



IQC



Components Test



Assembly



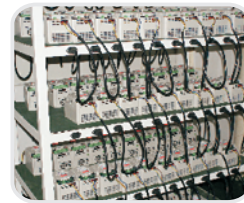
Loading Test



SMD



PCBA Coating



50°C Aging Test (24 hours)



Packing & Dispatching

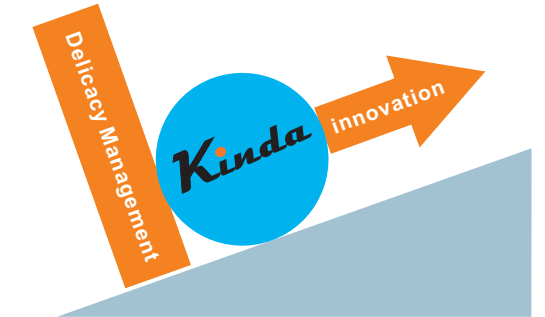


World-class components inside, stronger "bones", healthier "body".



- Kinda's R&D core team members have more than ten years working experiences in frequency inverters field.
- Good management of software core algorithm.
- Better knowledge and experiences for variable applications.
- Strong ability for customized functions design.
- Young team, dynamic, motivated.
- Market-oriented developing.

➤ Kinda Management Idea



- ✧ Kinda's just like a ball on the slope.
- ✧ Innovation is the power to pull the ball to go up.
- ✧ Delicacy management is the inverse power to prevent the ball going down.

Delicacy Management

||

Detail Management + 100% Executive Ability

KD100

KD200



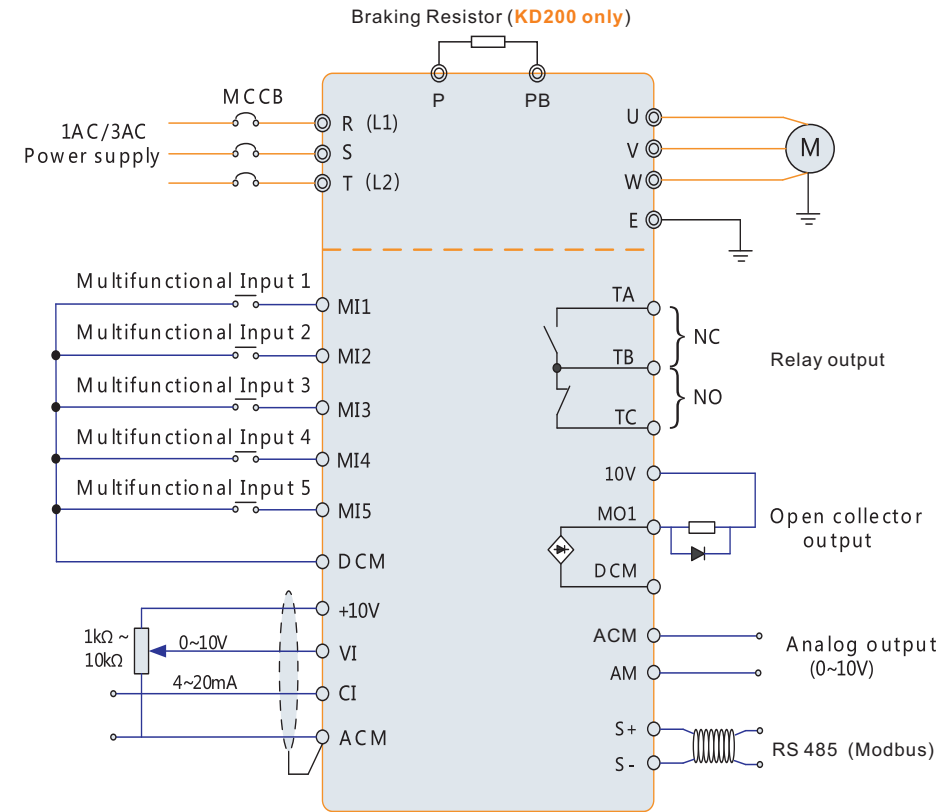
Robust design, high start torque.

V/f & Sensorless Vector Control (SVC).

Better cost-effective performance.

Total failure ratio <1%.

Widely used in different applications.



KD300



General purpose frequency inverter.

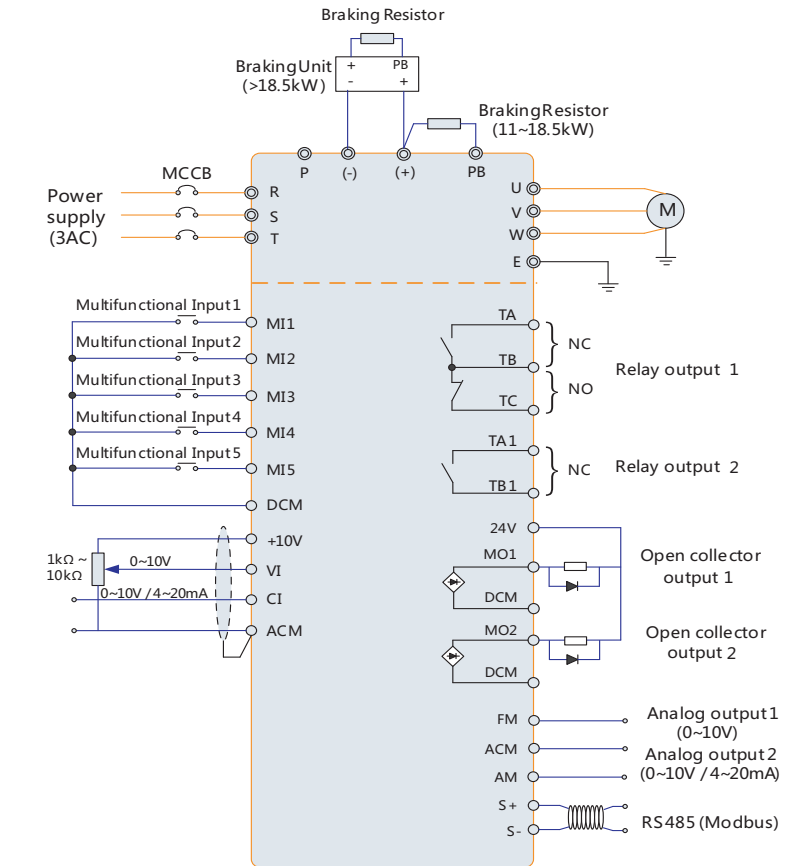
V/f, Sensorless Vector Control(SVC).

Infineon & Fuji IGBT inside.

High control accuracy.

Robust design, high start torque.

Better stability, total failure ratio <1%.



★ 1, This diagram is for >7.5kW

2, For ≤7.5kW ratings, please refer to manual for details.

➔ Specifications

Input & Output

Input voltage	1AC 220~240V(± 15%)
	3AC 220~240V(± 15%)
	3AC 380~460V(± 15%)
Input frequency	50Hz/60Hz±5%
Output voltage	0~ input voltage, deviation<±3%
Output frequency	0~ 600Hz

Control Characteristics

Control mode	V/f control Sensor-less vector control Torque control
Speed accuracy	±0.5% (V/f) ±0.2% (SVC)
Speed fluctuation	±0.3% (SVC)
Torque response	< 10ms (SVC)
Starting torque	0.5Hz : 150% (V/f) 0.25Hz:180% (SVC)
Overload capability	150% Rated Current 60s 180% Rated Current 10s 200% Rated Current 1s
Simple PLC Multi-step speed	16 steps speed External digital signal control Internal clock
PID function	Standard build-in
Communication	Modbus

Featured Functions

Featured functions	Input & Output delay
	Flexible parameters display
	AVR (Automatic Voltage Regulation)
	Timing control , fixed length control , etc.
	Simple PLC , 16-steps speed control
	Torque control build-in
	S curve acceleration/deceleration
	Multi-functional programmable keypad V/ f separated control

Environment Limitation

Installation location	Without direct sunlight, free from dust, corrosive gases, oil mist, flammable gases, water vapor, water drop and salt , etc.
Altitude	0~ 2000m Derated 1% for every 100m when the altitude is above 1000meters
Ambient temperature	-10°C ~ 50°C (Output derated while the temperature is higher than 40°C)
Storage temperature	-20°C ~ +70°C
Relative humidity	5~ 95%, no condensation

➔ Products Advantages



Big overload capacity

- ◆ 120% long time running without trip.
- ◆ 150% for 60 seconds
- ◆ 180% for 10 seconds
- ◆ 200% for 1 second



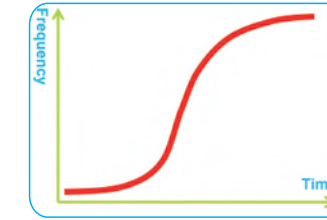
High output torque at low frequency

- ◆ Strong software and hardware.
- ◆ 0.5Hz/150% (V/f)
- ◆ 0.25Hz/180% (SVC)



Fast stop performance

- ◆ Better current limitation performance.
- ◆ Stops smoothly in very short time for heavy load.



S curve

- ◆ S curve acceleration / deceleration.
- ◆ Better start & stop performance.



- ◆ Compatible with±15% input voltage fluctuation, output voltage keeps stable.
- ◆ Avoid low frequency oscillation for big power motor.

**V/f
Seperate**

- ◆ Voltage and frequency can be set separately.
- ◆ Suitable for some special applications.

➤ Typical Applications



Printing & Dyeing



Packing machine



Wire Drawing Machine



Water Supply



Motor Control



Construction Hoist



Textile



Industrial Washing Machine



Ball Mill

➤ Kinda AC drives' performance in some typical applications

No.	Load Category	Details of Load	Requests	Features of Kinda VFD
1	CNC machine	Grinding machine, cutting	High output torque at low frequency, high speed accuracy	High control accuracy
2	Highspeed puncher	Smithing, punching press	high speed accuracy, good stop performance	Fast response
3	Stone machinery	Stone cutting machine, stone grinding machine	Large inertia, braking unit and resistors are necessary	Running stable
4	Washing machine	Industrial washing machine	Multi-step speed, high output torque while washing, short stop time	Multi-step speed running, fast stop
5	Wire drawing machine	Different types of wire drawing machines, winder	Heavy load, high torque at low frequency	High output torque at low frequency
6	Printing machine	Screen printing	high speed accuracy, good stop performance, continuous FWD/REV running	Good stop performance, running stable
7	Ball mill	Cementplant ball mill. Ceramics ball mill	Bad ambient environment, big start current	Good start performance, high energy saving ratio
8	Windlass	Winding and unwinding	Heavy load	High output torque at low frequency
9	Crusher machine	Stone and mine	Heavy load, energy saving, start smoothly	High output torque at low frequency, high energy saving ratio, running stable
10	Carving machine	Wood carving and stone carving machine	Multi-step speed	Fast response
11	Fans	Different types of fans	Different requests ACC/DEC time, speed tracking start.	High energy saving ratio
12	Pumps	Different types of pumps	1. PID is necessary for constant pressure water supply. 2. Output reactor is necessary while motor cable is too long. 3. For heavy load pump, VFD should be selected in a higher size.	PID control, running stable
13	Air compressor	Different types of air compressor	PID control, low frequency limitation is about 22~25Hz	Running stable, high energy saving ratio
14	Transmission equipment	Factory assembly line, conveyer etc.	Basic speed adjust, working smooth with control system	Running stable
15	Mixing equipment	Wind dispersing machine, mixers	For the big dynamic viscosity material system, VFD should be selected in a higher size.	High output torque at low frequency

➔ Selection Guide

KD300—00075 S 2

Series code	Input voltage
KD100: Mini size KD200: Economical type KD300: General purpose	2: 220~240V 4: 380~460V
Rated power	Input phase
00075: 0.75kW 01850: 18.5kW 16000: 160kW	S: Single phase T: Three phase

KD100

Model	Output power (kW)	Input current (A)	Output current (A)	Size & Weight
KD100—00040S2	0.4	6.5	2.3	142*85.5*113mm 1.1kg
KD100—00075S2	0.75	9.3	4	
KD100—00150S2	1.5	15.7	7	
KD100—00075T4	0.75	3.4	2.1	
KD100—00150T4	1.5	5	3.8	

KD200

Model	Output power (kW)	Input current (A)	Output current (A)	Size & Weight
KD200—00075S2	0.75	9.3	4	152*101*117mm 1.5kg
KD200—00150S2	1.5	15.7	7	
KD200—00220S2	1.5	24	9.6	
KD200—00075T2	0.75	5	4	
KD200—00150T2	1.5	9.5	7	264*130*153.5mm 3.5kg
KD200—00220T2	2.2	11	9.6	
KD200—00400T2	4.0	20.5	17	
KD200—00075T4	0.75	3.4	2.1	152*101*117mm 1.5kg
KD200—00150T4	1.5	5	3.8	
KD200—00220T4	2.2	5.8	5.1	264*130*153.5mm 3.5kg
KD200—00400T4	4.0	11	9	
KD200—00550T4	5.5	14.6	13	
KD200—00750T4	7.5	20.5	17	

KD300

Model	Output power (kW)	Input current (A)	Output current (A)	Size & Weight
KD300—00075S2	0.75	9.3	4	174*113*132mm 2.0kg
KD300—00150S2	1.5	15.7	7	
KD300—00220S2	1.5	24	9.6	
KD300—00075T4	0.75	3.4	2.8	
KD300—00150T4	1.5	5	4.4	246*160.7*147.5mm 3.6kg
KD300—00220T4	2.2	6.5	5.8	
KD300—00400T4	4.0	11	10	
KD300—00550T4	5.5	14.6	13	375*210*196mm 10.8kg
KD300—00750T4	7.5	20.5	17	
KD300—01100T4	11	26	25	
KD300—01500T4	15	35	32	440*285*206mm 16.8kg
KD300—01850T4	18.5	38.5	37	
KD300—02200T4	22	46.5	45	
KD300—03000T4	30	62	60	600*385*267.7mm 39kg
KD300—03700T4	37	76	75	
KD300—04500T4	45	92	90	
KD300—05500T4	55	113	110	

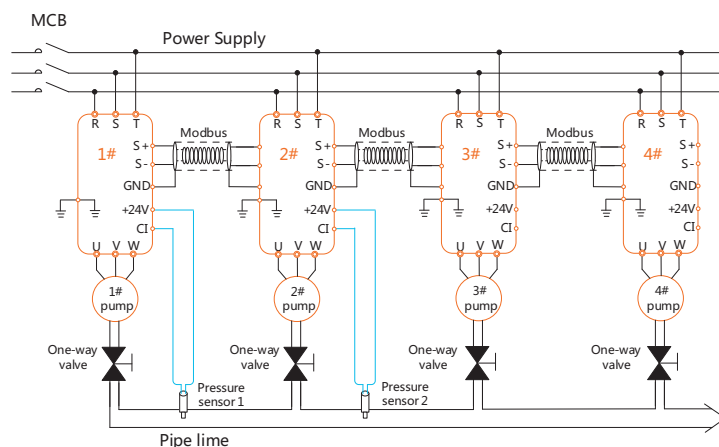
Model	Output power (kW)	Input current (A)	Output current (A)	Size & Weight
KD300—07500T4	75	157	152	659*413*327mm 60kg
KD300—09000T4	90	180	176	
KD300—11000T4	110	214	210	849*480*389mm 101kg
KD300—13200T4	132	260	253	
KD300—16000T4	160	310	304	
KD300—18500T4	185	365	350	1060*650*380.5mm 156kg
KD300—20000T4	200	385	380	
KD300—22000T4	220	430	426	
KD300—25000T4	250	485	465	
KD300—28000T4	280	531	520	1361.5*800*393mm 260kg
KD300—31500T4	315	620	585	
KD300—35500T4	355	665	650	
KD300—40000T4	400	785	725	
KD300—45000T4	450	880	820	
KD300—50000T4	500	960	900	
KD300—56000T4	560	1050	1000	
KD300—63000T4	630	1130	1100	

※ Please refer to user manual for KD300 3AC 220V selection

➔ KD 388 Series Constant Pressure Water Supply Inverter



➔ 4 Pumps System



➔ Features

Easy installation

- ◆ Mounted on the pump directly, without additional cabinet.
- ◆ Modbus communication, without wiring connection.
- ◆ Multiple pumps system, only one pressure sensor is necessary.

Easy operation

- ◆ Few parameters setting.
- ◆ Press-to-go, fully automatic running.
- ◆ Pressure setting can be changed easily.

Smart master-slave

- ◆ Master inverter and slave inverter can be operated alternately, prolong the pump lifetime.
- ◆ Pumps are switched smoothly, no pressure vibration.
- ◆ Pump increase / decrease automatically, always keep constant pressure.

➔ Selection Guide

KD388-00075S2

Series code KD388 series inverter special for constant pressure water supply	Input voltage 2: 220~240V 4: 380~460V
Rated power 00075: 0.75kW 00300: 3.0kW	Input phase S: Single phase T: Three phase

Model	Output power (kW)	Input current (A)	Output current (A)	Size & Weight
KD388-00075S2	0.75	9.3	4	196.2*120*112mm 1.8kg
KD388-00150S2	1.5	15.7	7	
KD388-00220S2	1.5	24	9.6	
KD388-00300S2	3.0	27	13	Same as 380V
KD388-00075T4	0.75	3.2	2.1	196.2*120*112mm 1.8kg
KD388-00150T4	1.5	5.0	3.8	
KD388-00220T4	1.5	6.5	5.1	
KD388-00300T4	3.0	9.0	6.8	150*241*142.5mm 3.2kg
KD388-00400T4	4.0	11	9	
KD388-00550T4	5.5	20.5	13	
KD388-00750T4	7.5	27	17	

※ Please refer to user manual for 3AC 220V and higher ratings selection.

➔ Applications

Deep well pump, submersible pump, sewerage pump, pipeline pump, booster pump, multistage pump, centrifugal pump etc.

Special for living water supply systems, hot water supply system, high-rise water supply system, fire fighting water supply system, sewer system and irrigation system etc.

